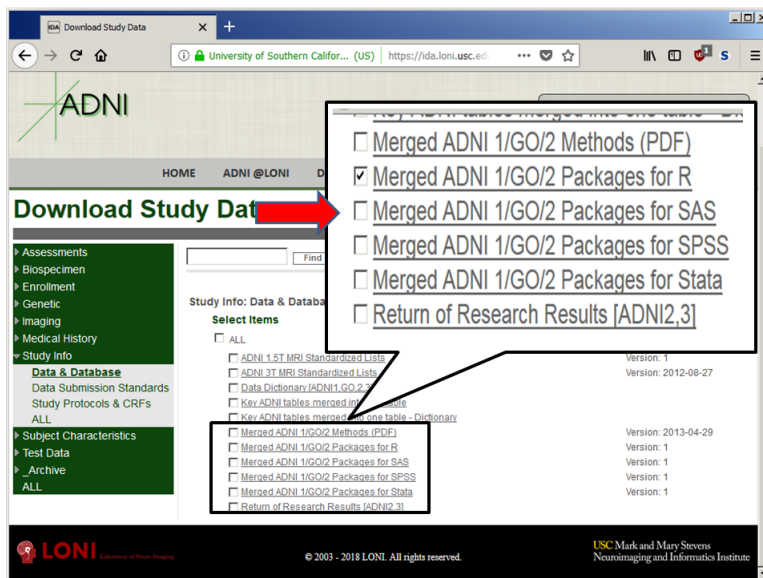


How to use ADNI Merge Packages in Windows

- R version:

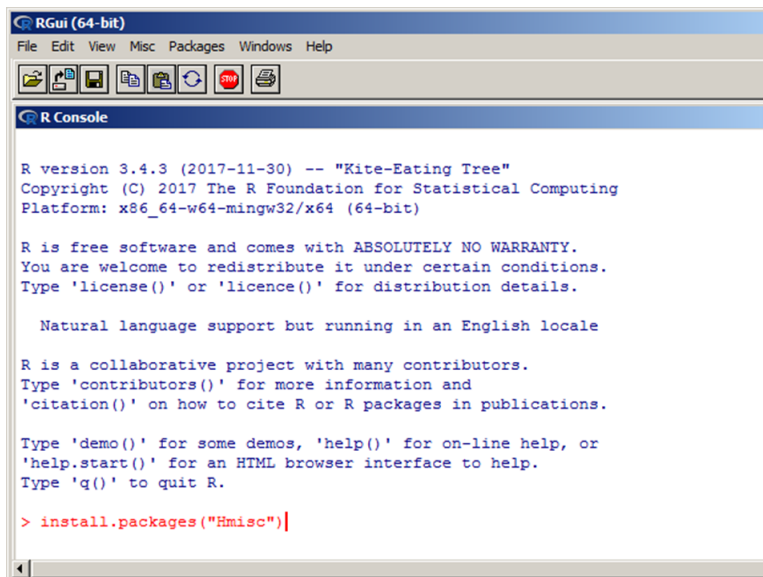
1. Download ADNIMERGE_0.0.1.tar.gz from LONI.



2. Open R. (Your R should be up to date; older versions may not work)

3. Install Hmisc package to your computer if it is not installed already.

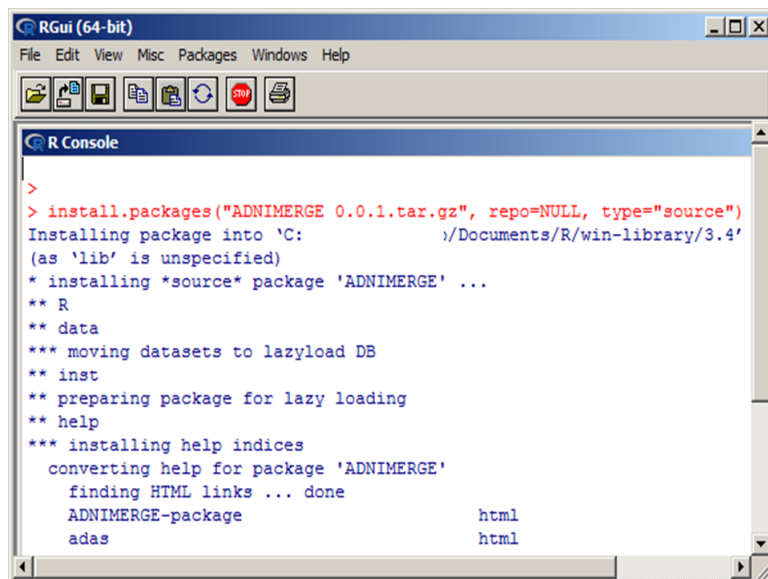
```
install.packages("Hmisc")
```



How to use ADNI Merge Packages in Windows

4. Install the ADNIMERGE package you have downloaded at Step 1.

```
install.packages("../your path/ADNIMERGE_0.0.1.tar.gz", repos=NULL, type="source")
```

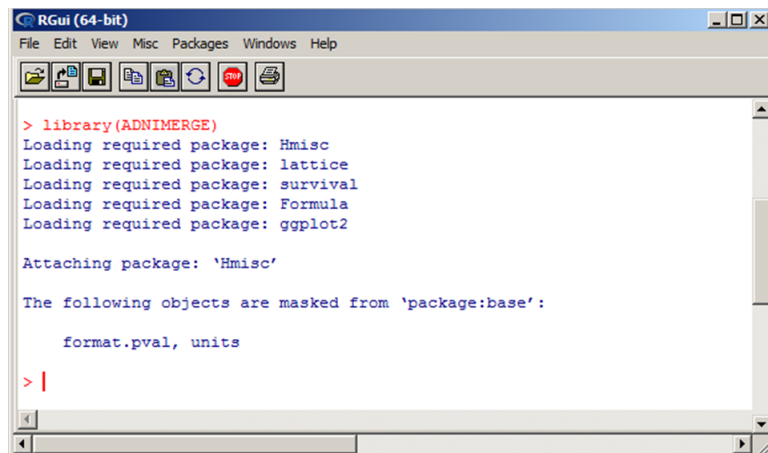


```
RGui (64-bit)
File Edit View Misc Packages Windows Help

R Console
>
> install.packages("ADNIMERGE 0.0.1.tar.gz", repo=NULL, type="source")
Installing package into 'C:                        \Documents/R/win-library/3.4'
(as 'lib' is unspecified)
* installing *source* package 'ADNIMERGE' ...
** R
** data
*** moving datasets to lazyload DB
** inst
** preparing package for lazy loading
** help
*** installing help indices
converting help for package 'ADNIMERGE'
finding HTML links ... done
ADNIMERGE-package          html
adas                       html
```

5. To load the ADNIMERGE package.

```
library(ADNIMERGE)
```



```
RGui (64-bit)
File Edit View Misc Packages Windows Help

R Console
> library(ADNIMERGE)
Loading required package: Hmisc
Loading required package: lattice
Loading required package: survival
Loading required package: Formula
Loading required package: ggplot2

Attaching package: 'Hmisc'

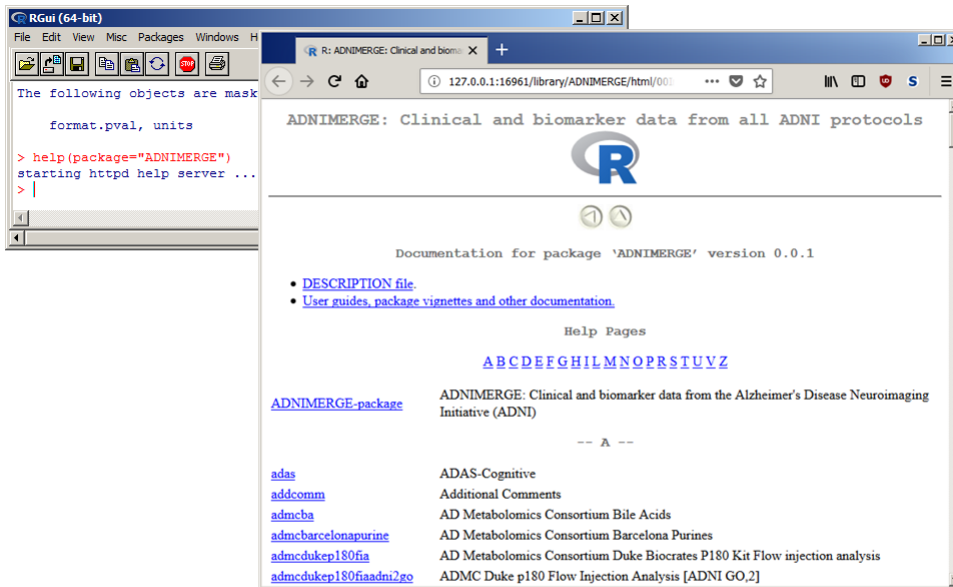
The following objects are masked from 'package:base':

  format.pval, units

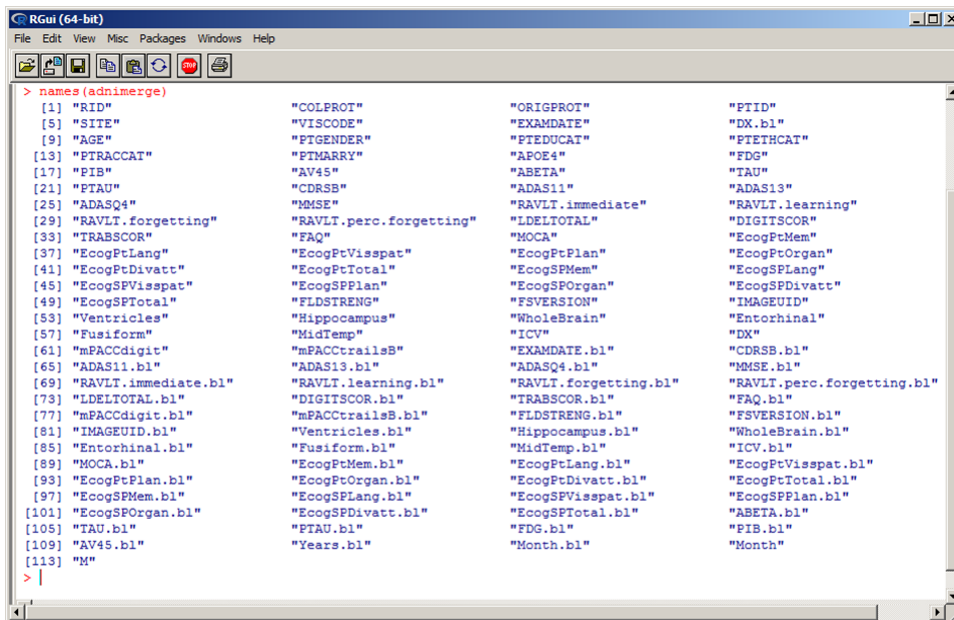
> |
```

How to use ADNI Merge Packages in Windows

- To see the documentation, `help(package="ADNIMERGE")`.

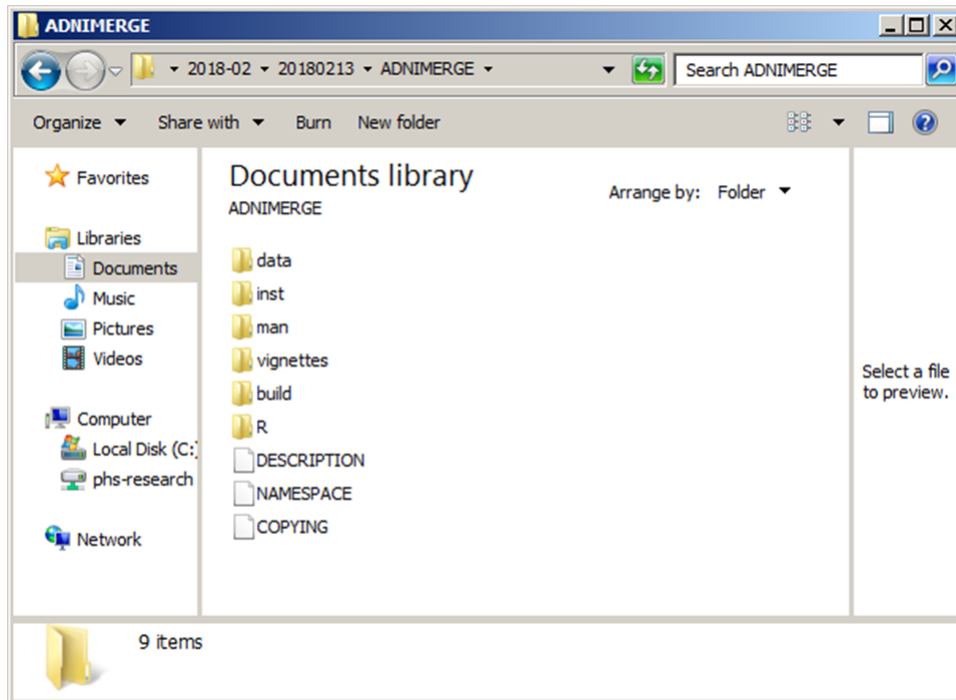


6. ADNIMERGE package contains all ADNI data files, so you can start working with them.
 - One of the dataframes is `adnimerge` which contains commonly used variables. (i.e. demographics, neuropsychological testing, CSF, MRI and PET as shown below)



How to use ADNI Merge Packages in Windows

- From Windows Explorer, you can open/extract ADNIMERGE_0.0.1.tar.gz file using 7-zip (7-zip is an open source file archiver designed for Windows.)



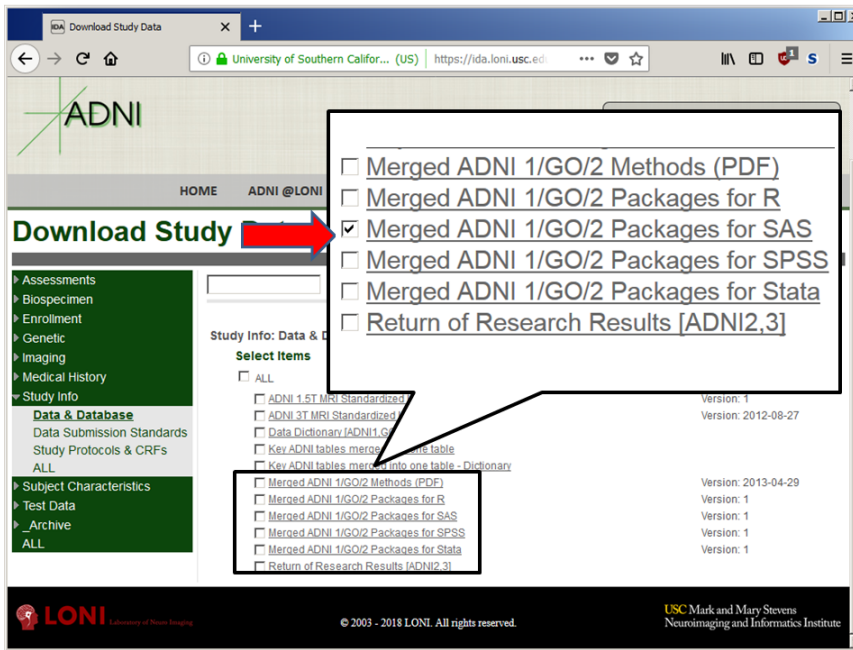
- You see data, inst, man, R folders.
- inst folder contains useful examples.

7. More info about ADNIMERGE packages, please visit <https://adni.bitbucket.io>

How to use ADNI Merge Packages in Windows

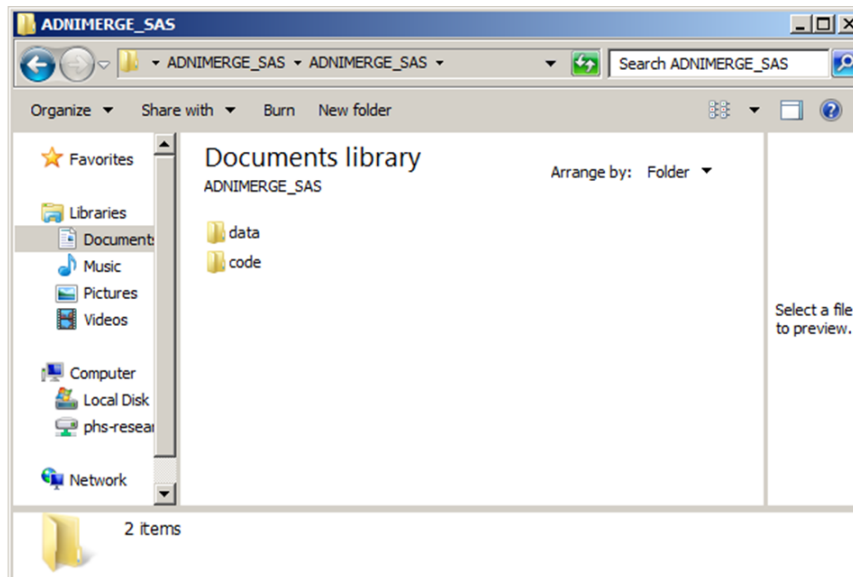
- SAS version:

1. Download ADNIMERGE_SAS.zip from LONI.



2. Extract ADNIMERGE_SAS.zip file.

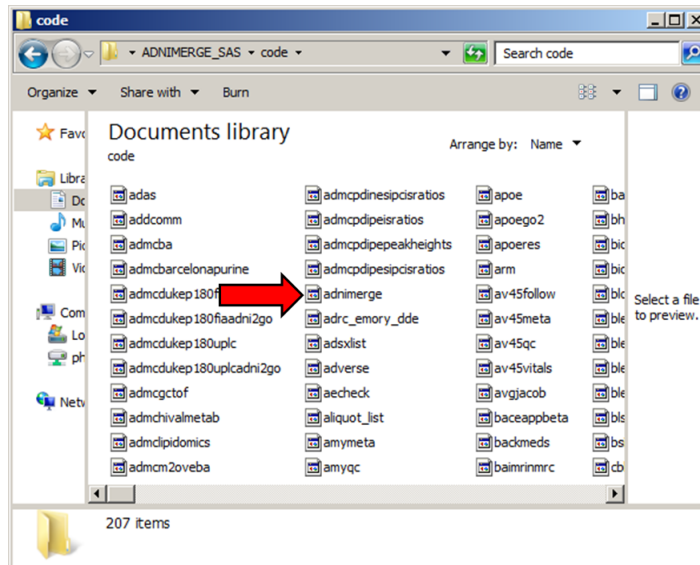
3. Under ADNIMERGE_SAS folder, you will find a code folder and data folder.



How to use ADNI Merge Packages in Windows

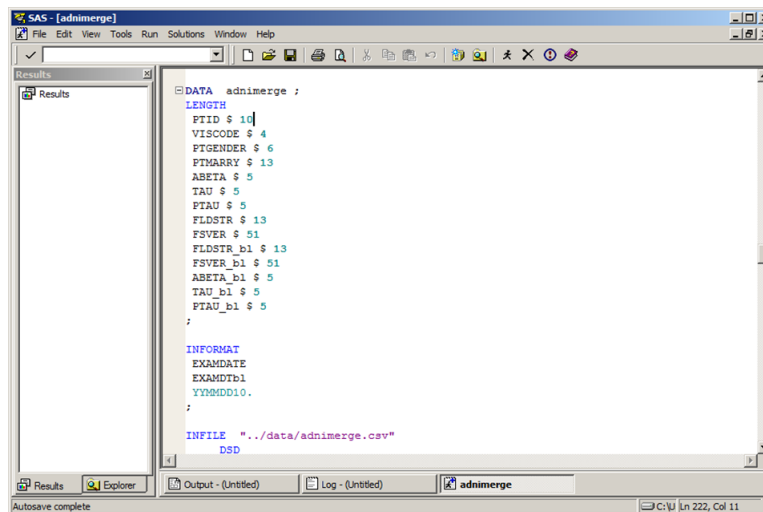
4. In the code folder, there are more than 200 SAS programs.

- For example, we can open `adnimerge.sas`.
 - * The simplest method is to double-click on `adnimerge.sas`.
 - * This initiates SAS and opens the programming file
 - * This also sets the working directory under the `code` folder.



- You can Run the program.

Because we set the working directory under the `code` folder, the program can call the data file correctly.



- SAS will create data called `adnimerge` under SAS's Work library.
- `adnimerge` contains commonly used variables. (i.e. demographics, neuropsychological testing, MRI and PET)

How to use ADNI Merge Packages in Windows

- SPSS version:
 1. Download ADNIMERGE_SPSS.zip from LONI.
 2. Extract ADNIMERGE_SPSS.zip file.
 3. Under the ADNIMERGE_SPSS file, you will find code folder and data folder.
 4. In the code folder, there are more than 120 SPSS programs.
- STATA version:
 1. Download ADNIMERGE_Stata.zip from LONI.
 2. Extract ADNIMERGE_Stata.zip file.
 3. Under the ADNIMERGE_Stata file, you will find more than 120 STATA data files.
 4. Date variables are NOT formatted in the ADNIMERGE_Stata.
(To format EXAMDATE, you can type at command line: `format EXAMDATE %d`)
- You can also download the ADNIMERGE.csv table from the Study Data page (Key ADNI tables merged into one table)
 - This table contains commonly used variables. (i.e. demographics, neuropsychological testing, CSF, MRI and PET)

